

PRODUCT INFORMATION PACKET

Model No: 5KC36JN266
Catalog No: G1098
1/2,3600,DP,48,1/60/115/230
General Purpose Motors



Regal and Marathon are trademarks of Regal Rexnord Corporation or one of its affiliated companies.
©2021 Regal Rexnord Corporation, All Rights Reserved. MC017097E

Nameplate Specifications

Output HP	0.50 Hp	Output KW	0.37 kW
Frequency	60 Hz	Voltage	115/230 V
Current	7.6 A	Speed	3450 rpm
Service Factor	1.25	Phase	1
Efficiency	0 %	Power Factor	0
Duty	Continuous	Insulation Class	B
KVA Code	L	Frame	48
Enclosure	Drip Proof	Thermal Protection	N/R
Ambient Temperature	40 °C	Drive End Bearing Size	6203
Opp Drive End Bearing Size	6203	UL	Recognized
CSA	Yes	CE	N
Number of Speeds	1		

Technical Specifications

Electrical Type	Capacitor Start Induction Run	Starting Method	SM
Poles	2	Rotation	Counterclockwise/Clockwise
Mounting	Rigid Base	Motor Orientation	ANY
Drive End Bearing	BALL	Opp Drive End Bearing	BALL
Frame Material	Rolled Steel	Overall Length	9.66 in
Frame Length	6.22 in	Shaft Extension	.500 X 1.50 FLAT in
Outline Drawing	52A102015P1	Connection Drawing	121A852

This is an uncontrolled document once printed or downloaded and is subject to change without notice. Date Created:10/12/2021

SHEET 9
REV 9
52A102015
SIZE DRAWING NO. A

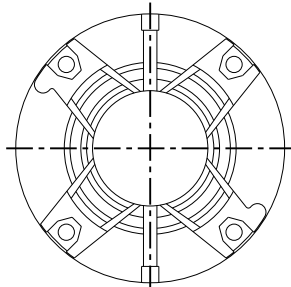
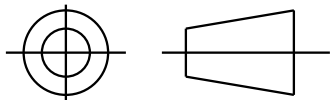
RBC PROPRIETARY AND CONFIDENTIAL INFORMATION

This document is the property of REGAL BELOIT Corporation ("RBC") including its subsidiaries and divisions and contains proprietary information of RBC. This document is loaned on the express condition that neither it nor the information contained therein shall be disclosed to others without the express written consent of RBC, and that the information shall be used by the recipient only as approved expressly by RBC. This document shall be returned to RBC upon its request. This document may be subject to certain restrictions under U.S. export control laws and regulations.

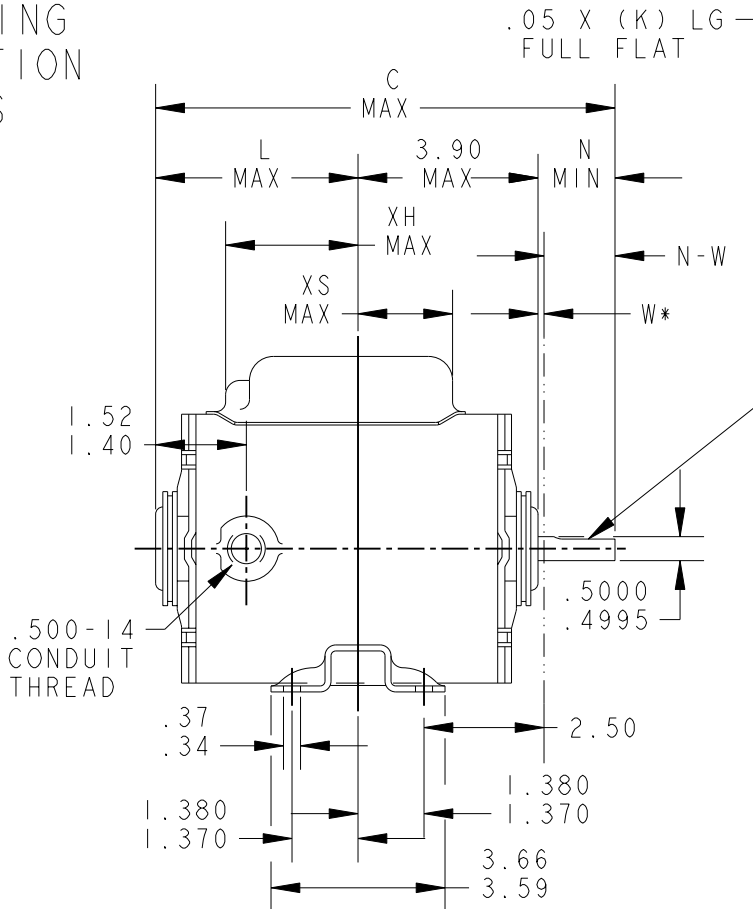
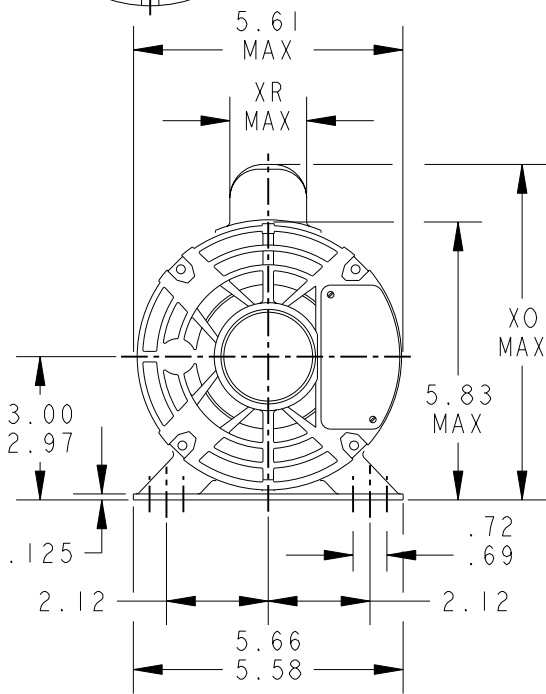
REVISIONS

REV.	DESCRIPTION	DATE	APPROVED
8	REDRAWN NO CHANGE TI96-22390	07/25/96	MDP
9	MADE CHG AS PER IS05-1877	08/11/05	PRAVEEN.K

THIRD ANGLE PROJECTION



VIEW SHOWING PE VENTILATION OPENINGS



*W IS A CLEARANCE DUE TO VARIATION IN PARTS & ASSEMBLY.

6	KC	35	48	9.57	1.16	4.22	1.50	1.63/1.41	2.59	7.93	2.22	1.93
5	KC	36	48	10.00	1.16	4.65	1.50	1.63/1.41	3.02	7.93	2.22	1.22
4	KC	37	48	10.40	1.16	5.05	1.50	1.63/1.41	3.42	7.31	1.60	2.35
3	KC	33	48Z	9.19	2.16	3.84	2.50	2.63/2.50	2.21	7.93	2.22	2.35
2	KC	37	48	10.40	1.16	5.05	1.50	1.63/1.41	3.42	7.93	2.22	2.35
1	KC	36	48	10.00	1.16	4.65	1.50	1.63/1.41	3.02	7.31	1.60	2.35

PT	TYPE	GE SIZE	NEMA FR	C	K	L	N	N-W	XH	XO	XR	XS
----	------	---------	---------	---	---	---	---	-----	----	----	----	----

FOR ADDITIONAL INFO REFER TO:	SIGNATURES	DATE
APPLIED PRACTICES	MODEL	
DIMENSIONS ARE IN INCHES	DETAIL	MDP 09/21/76
TOLERANCE ON:	CHECKED	
1 PL DECIMALS ± 0.1	ENGRG	
2 PL DECIMALS ± 0.02	MFG	
3 PL DECIMALS ± 0.005	QUALITY	
ANGLES ± 1.0	ISSUED	MDP 07/25/96
FRACTIONS ±		
FINISH ✓		
MATERIAL	SOLID MODEL: 52A102015	



REGAL-BELOIT CORPORATION

TITLE
OUTLINE
FROM N - GENERAL PURPOSE MOTOR - DRIP PROOF - WELDED BASE - BALL OR SLEEVE BEARING

SIZE	DRAWING	REV
A	52A102015	9
SCALE: 1.000	REF. No: .	SHEET 1 of 1